



JSC BevelClad

Bevelback Weatherboard Cladding

20mm Cavity on Rigid Underlay

Version 1.3 | 24/02/2025



PREMIUM ARCHITECTURAL
& BUILDING SOLUTIONS

Index



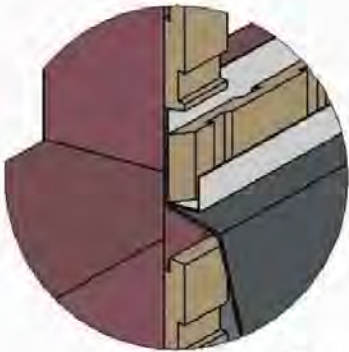
20mm Cavity Setout Guide Fixed Vertically

JB-R20-SEC01	Sectional Detail – Plan View
JB-R20-SEC02	Sectional Detail – Cross Section View
JB-R20-01	Bottom Plate Detail
JB-R20-01A	Bottom Plate on Timber Detail
JB-R20-02	Top Plate Soffit Detail
JB-R20-03	Raking Soffit Detail
JB-R20-04	Bottom Plate Soffit Detail
JB-R20-05	Inter Storey Junction Detail
JB-R20-06	Parapet Detail
JB-R20-10	Internal Corner Detail
JB-R20-11	Internal Corner Detail – J110
JB-R20-12	External Corner Box Detail
JB-R20-15	External Corner Soaker Detail
JB-R20-20	Scarf Detail
JB-R20-21	Pipe Penetration Detail
JB-R20-25	Meterbox Head Detail
JB-R20-26	Meterbox Jamb Detail
JB-R20-27	Meterbox Sill Detail
JB-R20-30	Window Head Detail
JB-R20-31	Window Jamb Detail
JB-R20-33	Window Sill Detail

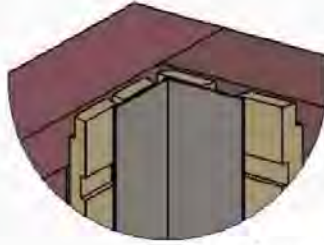
20mm Cavity Batten Setout Fixed Vertically

CodeMark
CMNZ30082

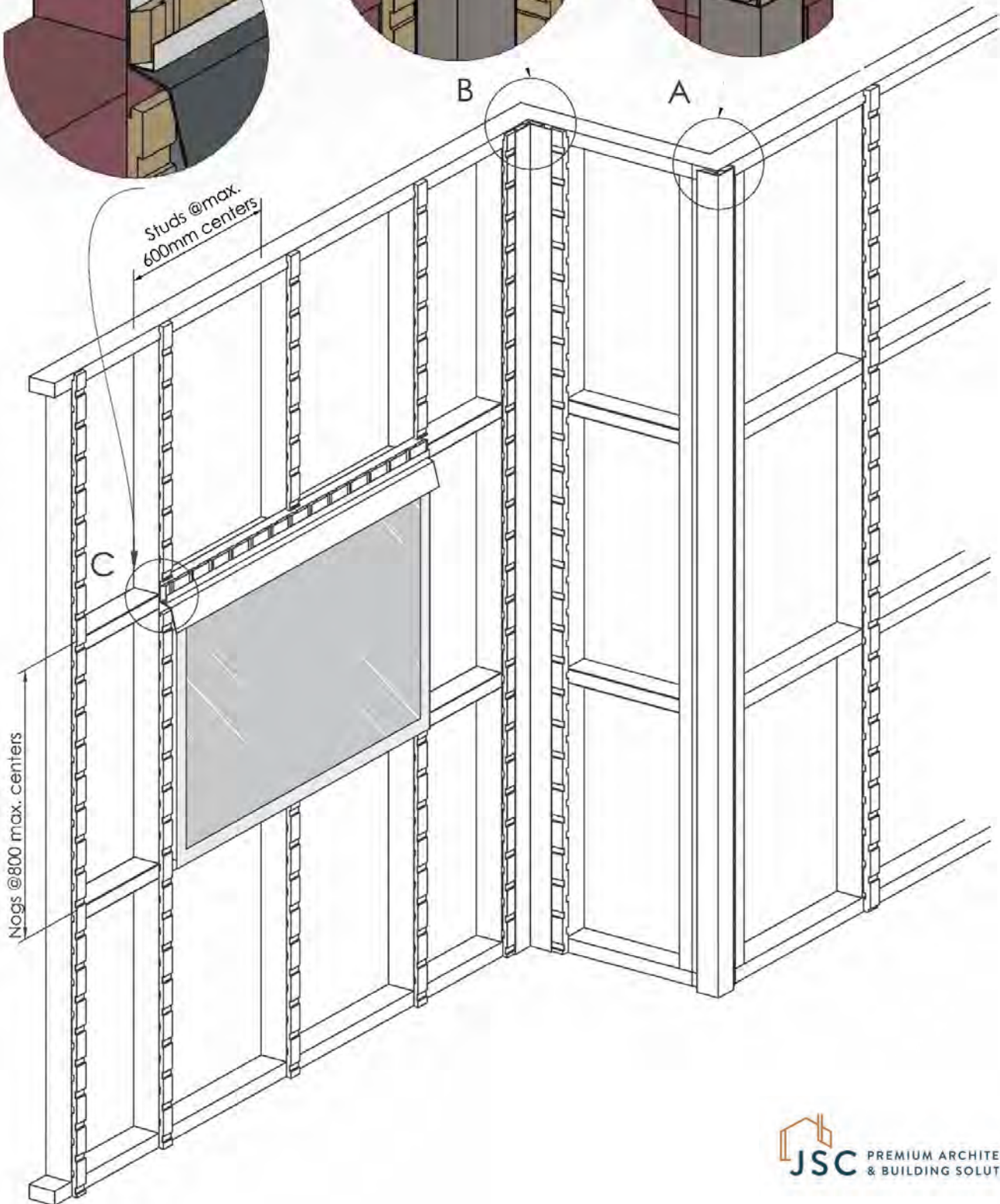
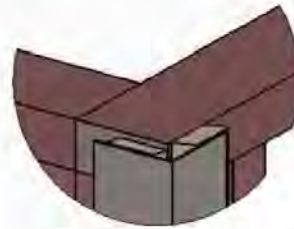
Window Details
JB-30,31,32,33



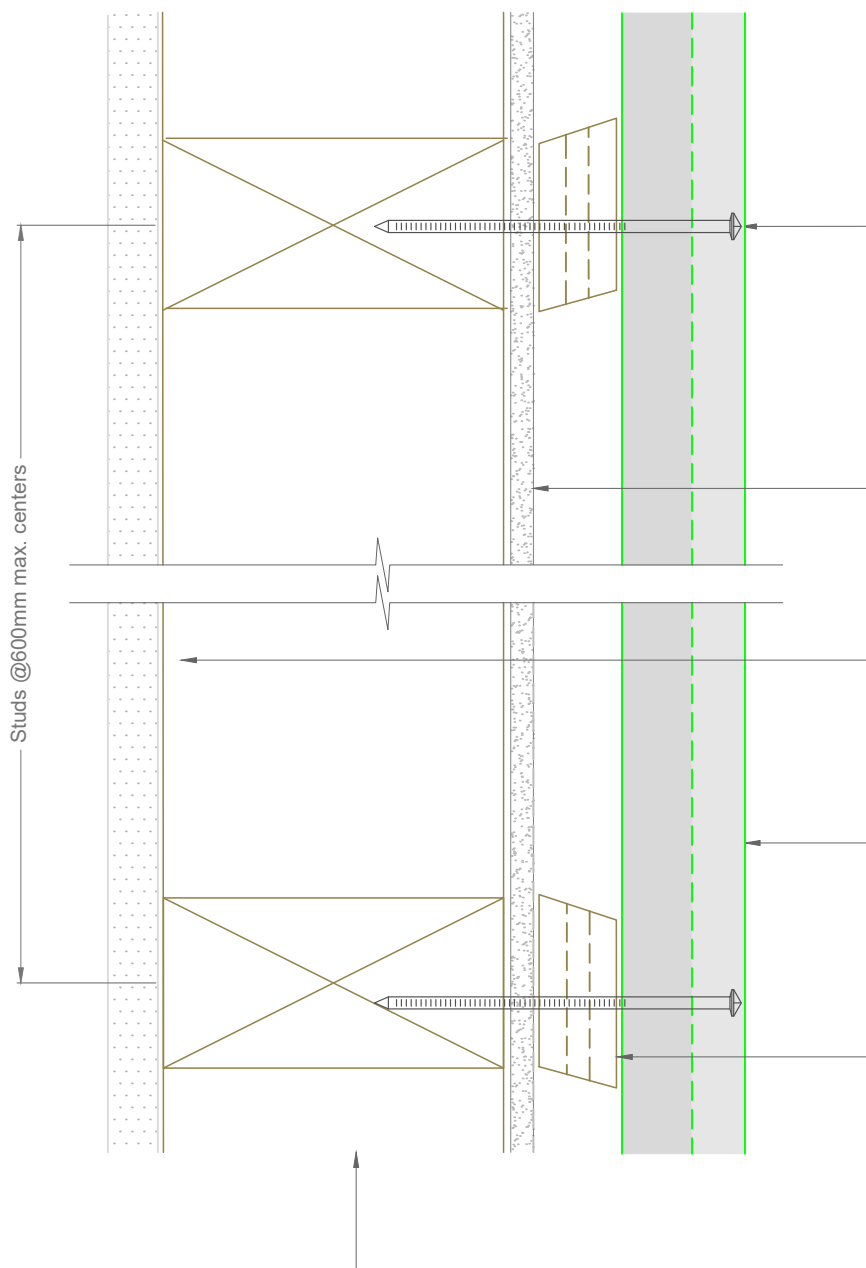
Internal Corner Details
JB-10,11



External Corner Details
JB-12,13



Plan View



Single fix at each stud with annular grooved stainless steel or silicon bronze nails as per NZBC/E2 Table 24

- Pre-drilled 1mm diameter smaller than nail gauge
- Nailed with a 2° upward slope
- 30mm min penetration into framing
- Nailed 10mm above lap
- Minimum 50mm from ends of boards

Rigid wall underlay to comply with NZBC/E2 Table 23 and Section 9.1.7.2 installed to manufacturers specifications

Interior lining or use rigid air barrier for unlined walls such as gable ends. See NZBC/E2 Paragraph 9.1.4

Selected Bevel Back Weatherboard coated with approved coating to all 4 sides and all ends

JSC-U H3.2 45x20mm treated timber castellated cavity batten

- Tacked on with SS Clout or similar
- Keep 10mm gap to the cavity batten except at bottom plate
- Cut ends to slope away from wall (10-15°)

Framing to NZS 3604 or "fit for purpose"

Note: To be read in conjunction with complete JSC installation instructions • Details may be subject to change without notification

Sectional Detail - Rigid Underlay

JB-R20-SEC01

Scale: 1:2

Date: 24/02/2025

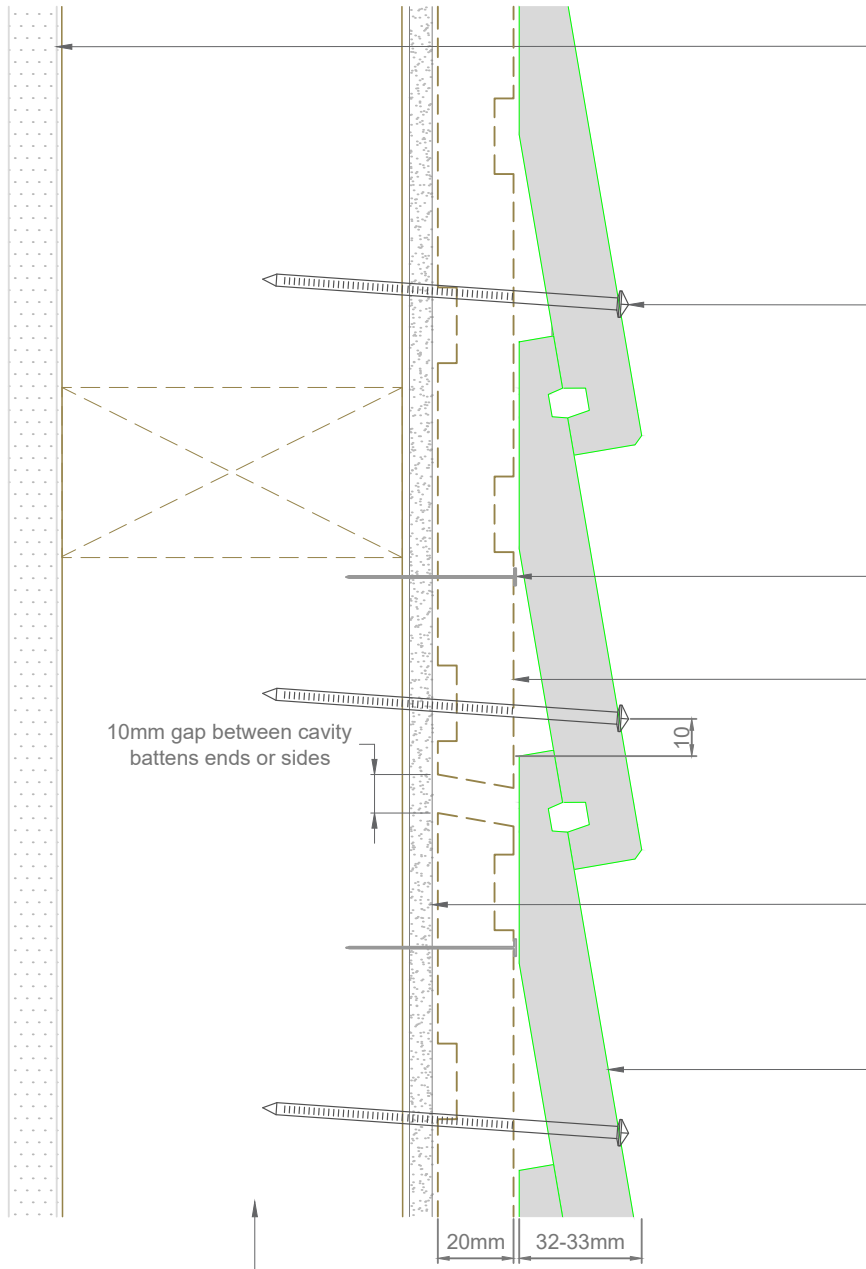
Email: TechHelp@jsttimber.co.nz

Web: www.jsttimber.co.nz

Auckland
20 Sawmill Road
Riverhead
☎ 09 412 2800

Christchurch
23 William Lewis Drive
Sockburn
☎ 03 348 9726

Cross Section View



Interior lining or use rigid air barrier for unlined walls such as gable ends. See NZBC/E2 paragraph 9.1.4

Single fix at each stud with annular grooved stainless steel or silicon bronze nails as per NZBC/E2 Table 24

- Pre-drilled 1mm diameter smaller than nail gauge
- Nailed with a 2° upward slope
- 30mm min penetration into framing
- Nailed 10mm above lap
- Minimum 50mm from ends of boards

40-50mm Stainless Steel Clout

JSC-U H3.2 45x20mm treated timber castellated cavity batten

- Tacked on with SS Clout or similar
- Cut ends to slope away from wall (10-15°)

Wall underlay to comply with NZBC/E2 Table 23 installed to manufacturer specification

JSC Bevel Back Weatherboard coated with approved coating to all 4 sides and ends

Framing to NZS 3604 or "fit for purpose"

Note: To be read in conjunction with complete JSC installation instructions • Details may be subject to change without notification

Sectional Detail - Rigid Underlay

JB-R20-SEC02

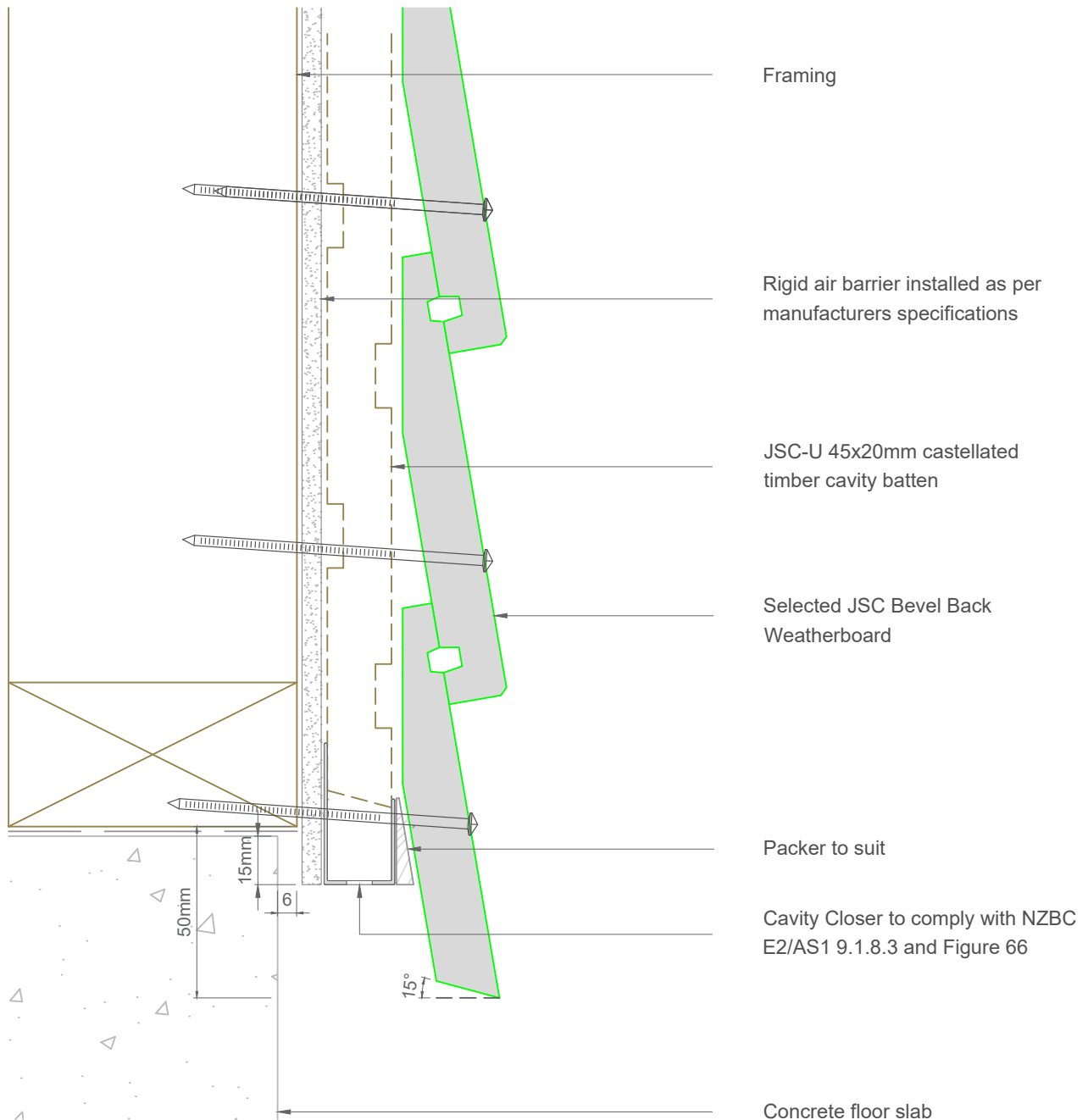
Scale: 1:2
Date: 24/02/2025

Email: TechHelp@jsctimber.co.nz

Web: www.jsctimber.co.nz

Auckland
20 Sawmill Road
Riverhead
☎ 09 412 2800

Christchurch
723 William Lewis Drive
Sockburn
☎ 03 348 9726



Note: To be read in conjunction with complete JSC installation instructions • Details may be subject to change without notification

Bottom Plate Detail - Rigid Underlay

JB-R20-01

Scale: 1:2

Date: 24/02/2025

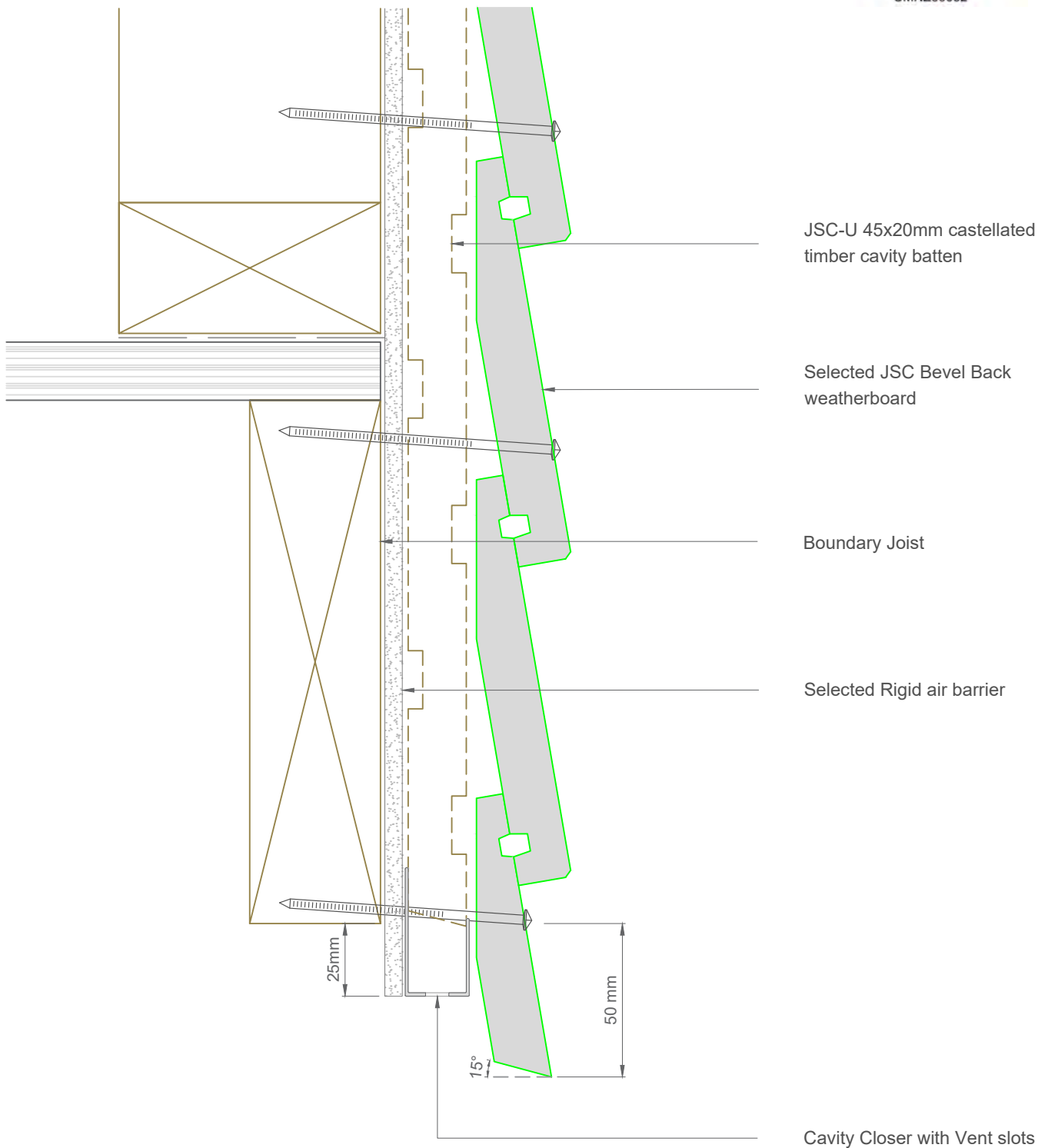
Email: TechHelp@jsctimber.co.nz

Web: www.jsctimber.co.nz

Auckland
20 Sawmill Road
Riverhead
☎ 09 412 2800

Christchurch
23 William Lewis Drive
Sockburn
☎ 03 348 9726

 **JSC** PREMIUM ARCHITECTURAL
& BUILDING SOLUTIONS



Note:- Maintain ground clearance as per NZBC/E2 paragraph 9.1.3.3 and Table 18

Note: To be read in conjunction with complete JSC installation instructions • Details may be subject to change without notification

Bottom Plate on Timber Floor Detail - Rigid Underlay

JB-R20-01A

Scale: 1:2

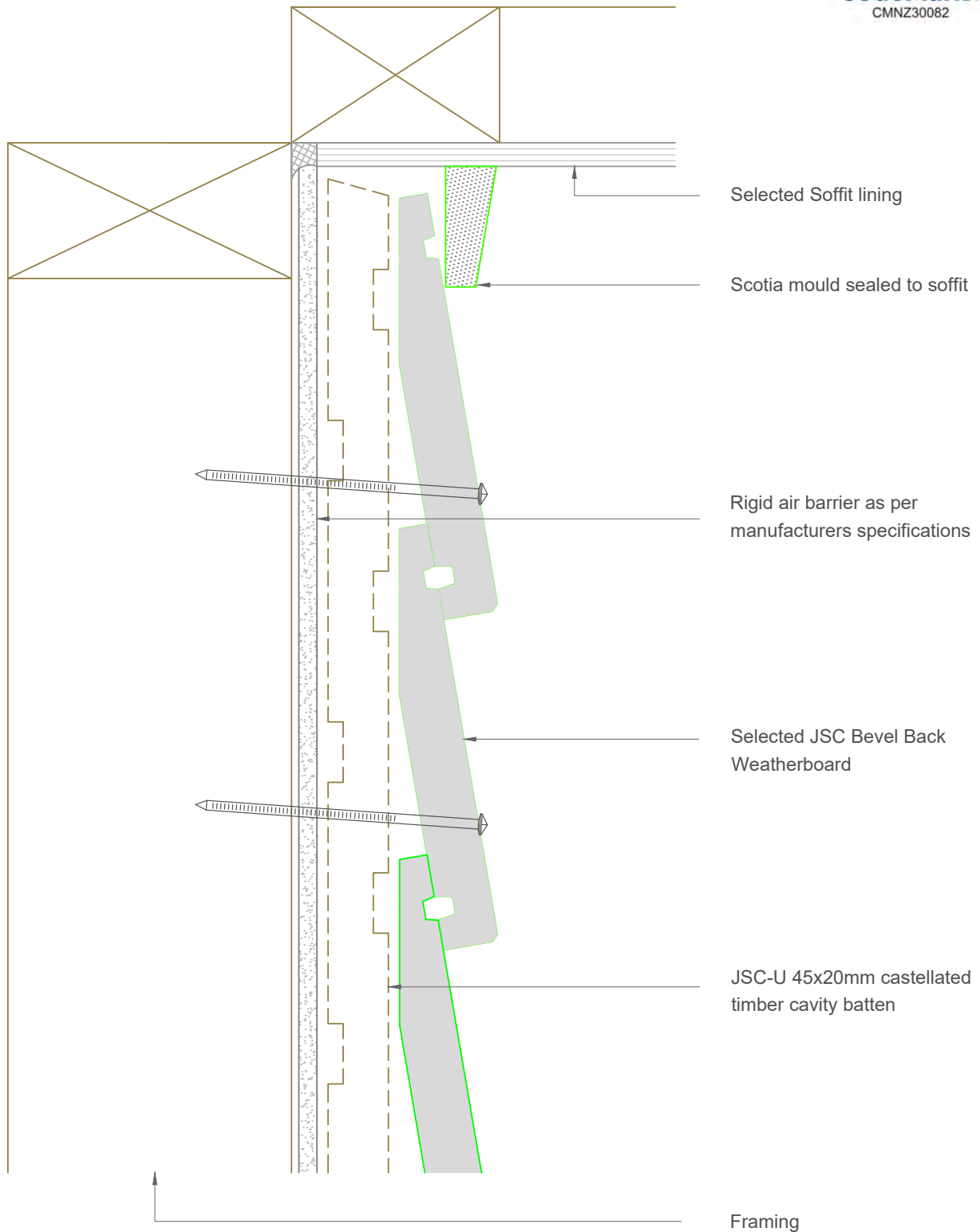
Date: 24/02/2025

Email: TechHelp@jsttimber.co.nz

Web: www.jsttimber.co.nz

Auckland
20 Sawmill Road
Riverhead
☎ 09 412 2800

Christchurch
23 William Lewis Drive
Sockburn
☎ 03 348 9726



Note: To be read in conjunction with complete JSC installation instructions • Details may be subject to change without notification

Top Plate Soffit Detail - Rigid Underlay

JB-R20-02

Scale: 1:2

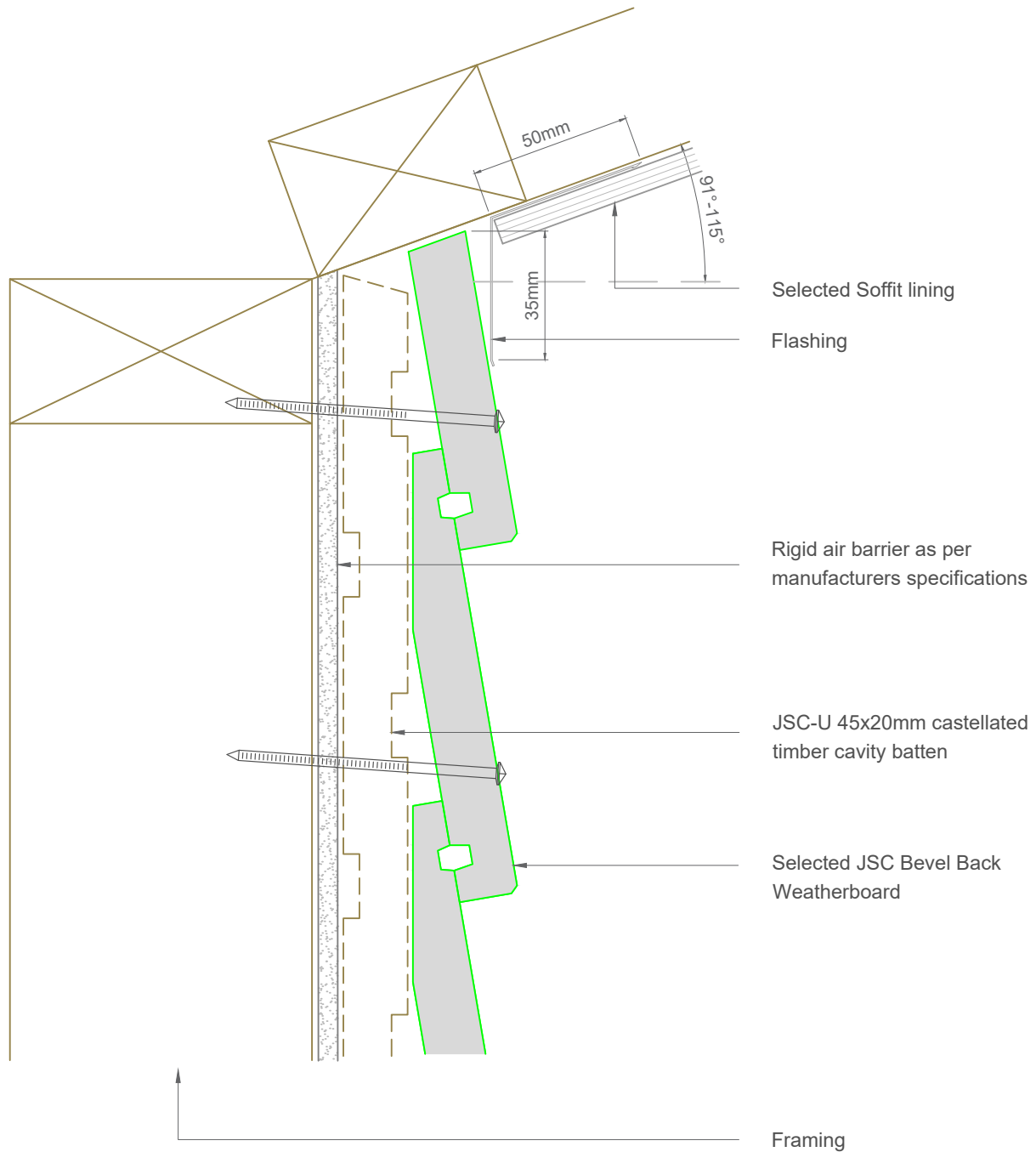
Date: 24/02/2025

Email: TechHelp@jsttimber.co.nz

Web: www.jsttimber.co.nz

Auckland
20 Sawmill Road
Riverhead
☎ 09 412 2800

Christchurch
23 William Lewis Drive
Sockburn
☎ 03 348 9726



Note: To be read in conjunction with complete JSC installation instructions • Details may be subject to change without notification

Raking Soffit Detail - Rigid Underlay

JB-R20-03

Scale: 1:2

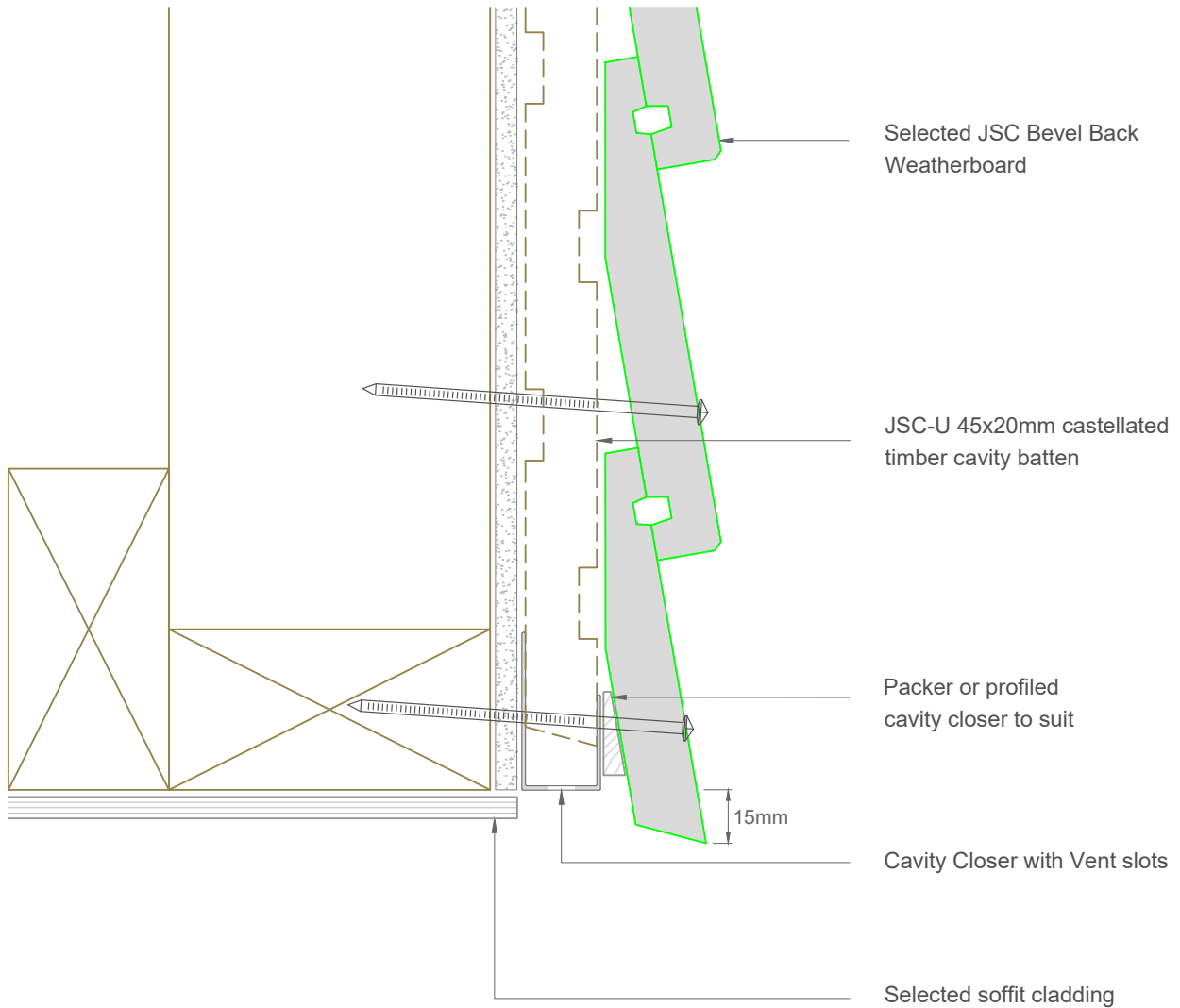
Date: 24/02/2025

Email: TechHelp@jsttimber.co.nz

Web: www.jsttimber.co.nz

Auckland
20 Sawmill Road
Riverhead
☎ 09 412 2800

Christchurch
23 William Lewis Drive
Sockburn
☎ 03 348 9726



Note: To be read in conjunction with complete JSC installation instructions • Details may be subject to change without notification

Bottom Plate Soffit Detail - Rigid Underlay

JB-R20-04

Scale: 1:2

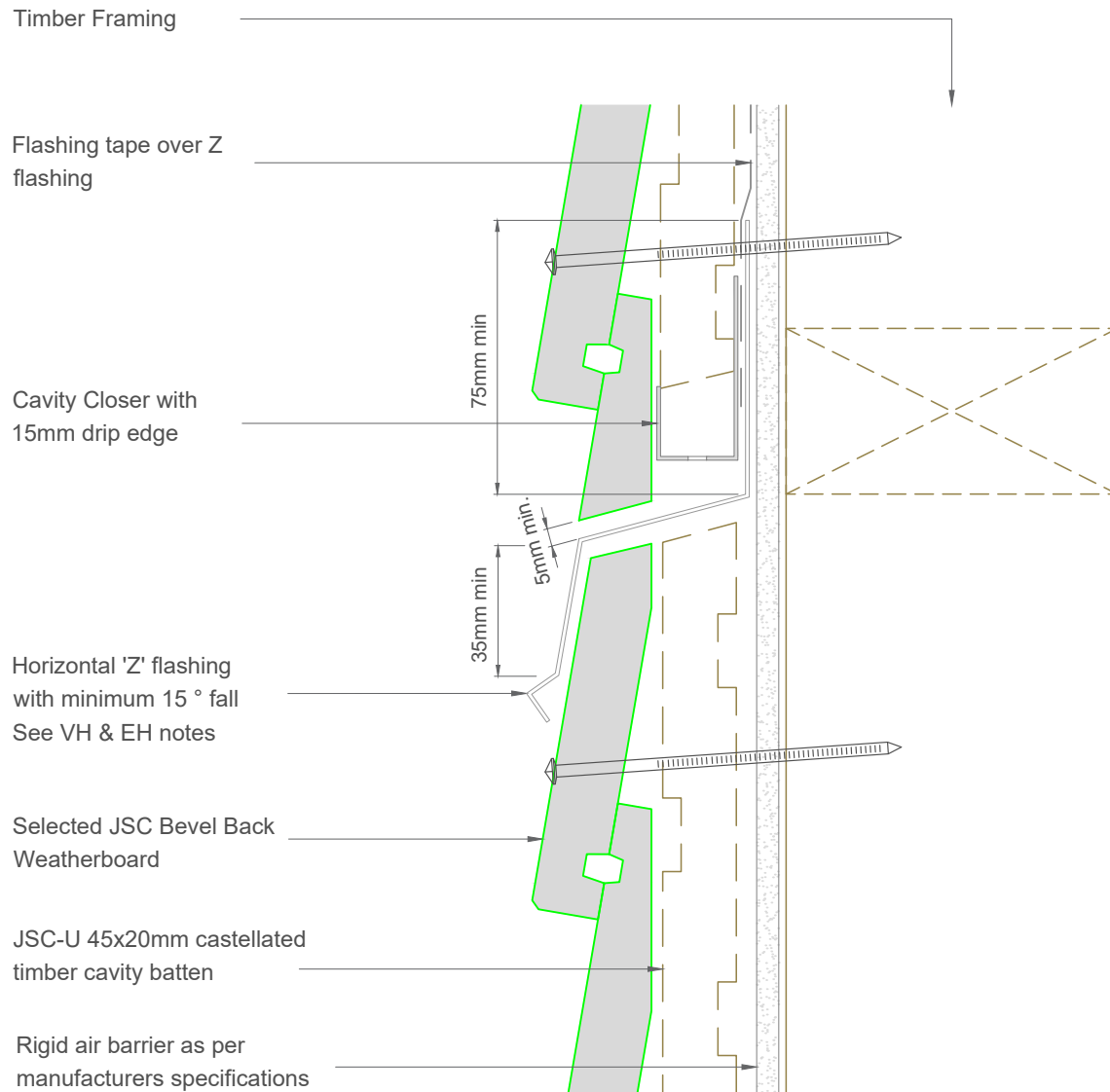
Date: 24/02/2025

Email: TechHelp@jsctimber.co.nz

Web: www.jsctimber.co.nz

Auckland
20 Sawmill Road
Riverhead
☎ 09 412 2800

Christchurch
23 William Lewis Drive
Sockburn
☎ 03 348 9726



Note: To be read in conjunction with complete JSC installation instructions • Details may be subject to change without notification

Inter Storey Junction Detail - Rigid Underlay

JB-R20-05

Scale: 1:2

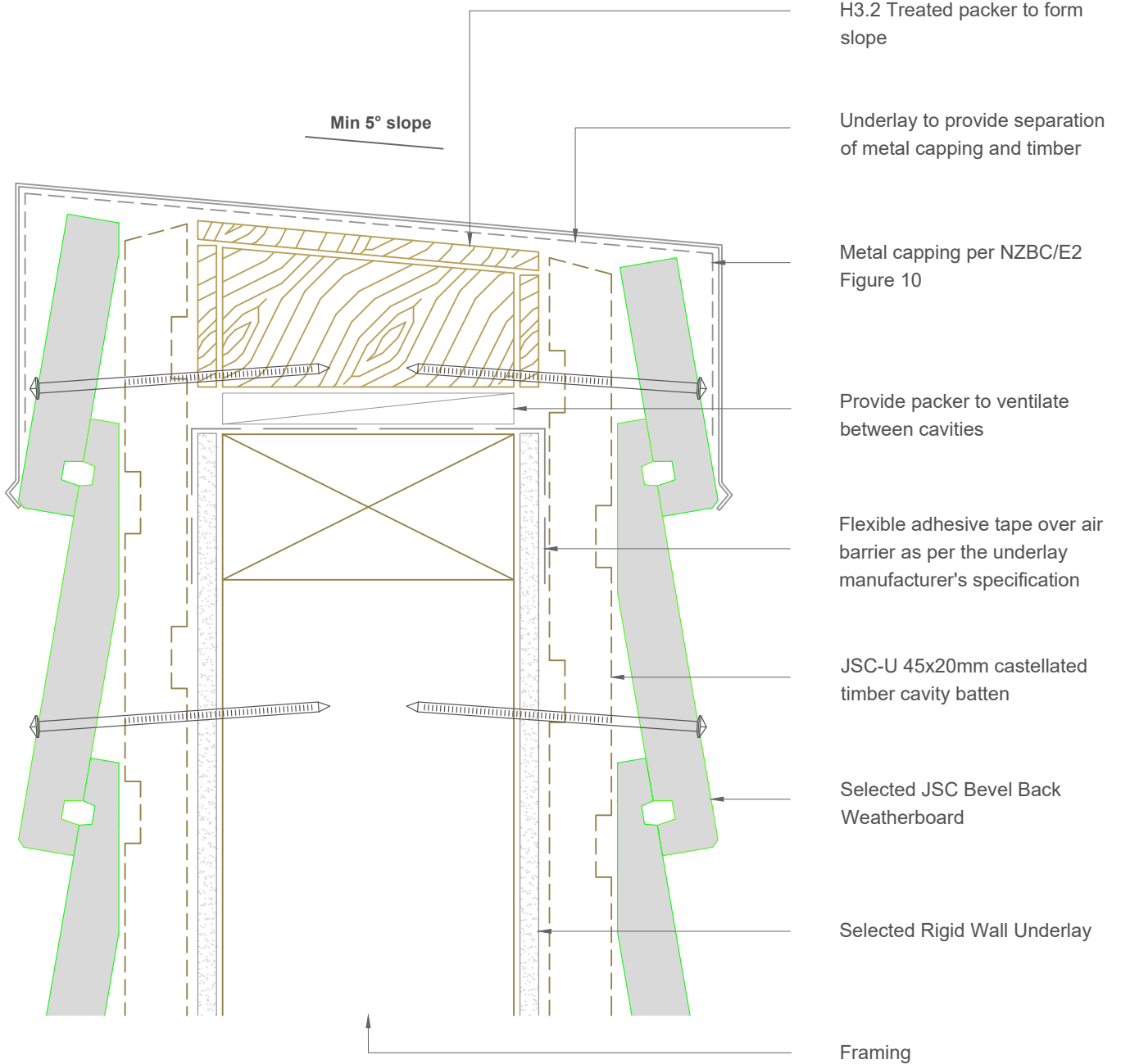
Date: 24/02/2025

Email: TechHelp@jsttimber.co.nz

Web: www.jsttimber.co.nz

Auckland
20 Sawmill Road
Riverhead
☎ 09 412 2800

Christchurch
23 William Lewis Drive
Sockburn
☎ 03 348 9726



Note:- Parapet Design & installation should comply to NZBC/E2 Section 6

Note: To be read in conjunction with complete JSC installation instructions • Details may be subject to change without notification

Parapet Detail - Rigid Underlay

JB-R20-06

Scale: 1:2

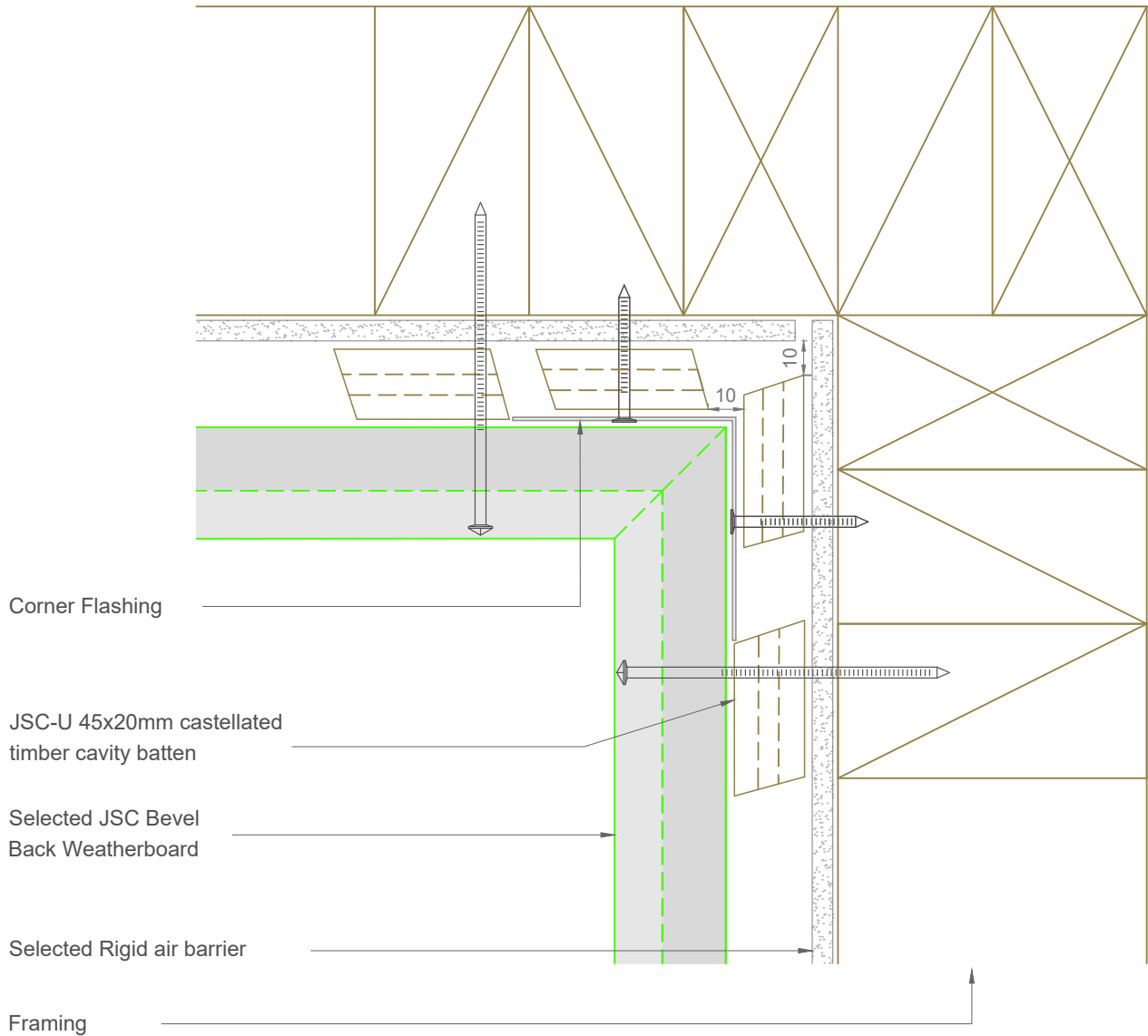
Date: 24/02/2025

Email: TechHelp@jsttimber.co.nz

Web: www.jsttimber.co.nz

Auckland
20 Sawmill Road
Riverhead
☎ 09 412 2800

Christchurch
23 William Lewis Drive
Sockburn
☎ 03 348 9726



Note: To be read in conjunction with complete JSC installation instructions • Details may be subject to change without notification

Internal Corner Detail - Rigid Underlay

JB-R20-10

Scale: 1:2

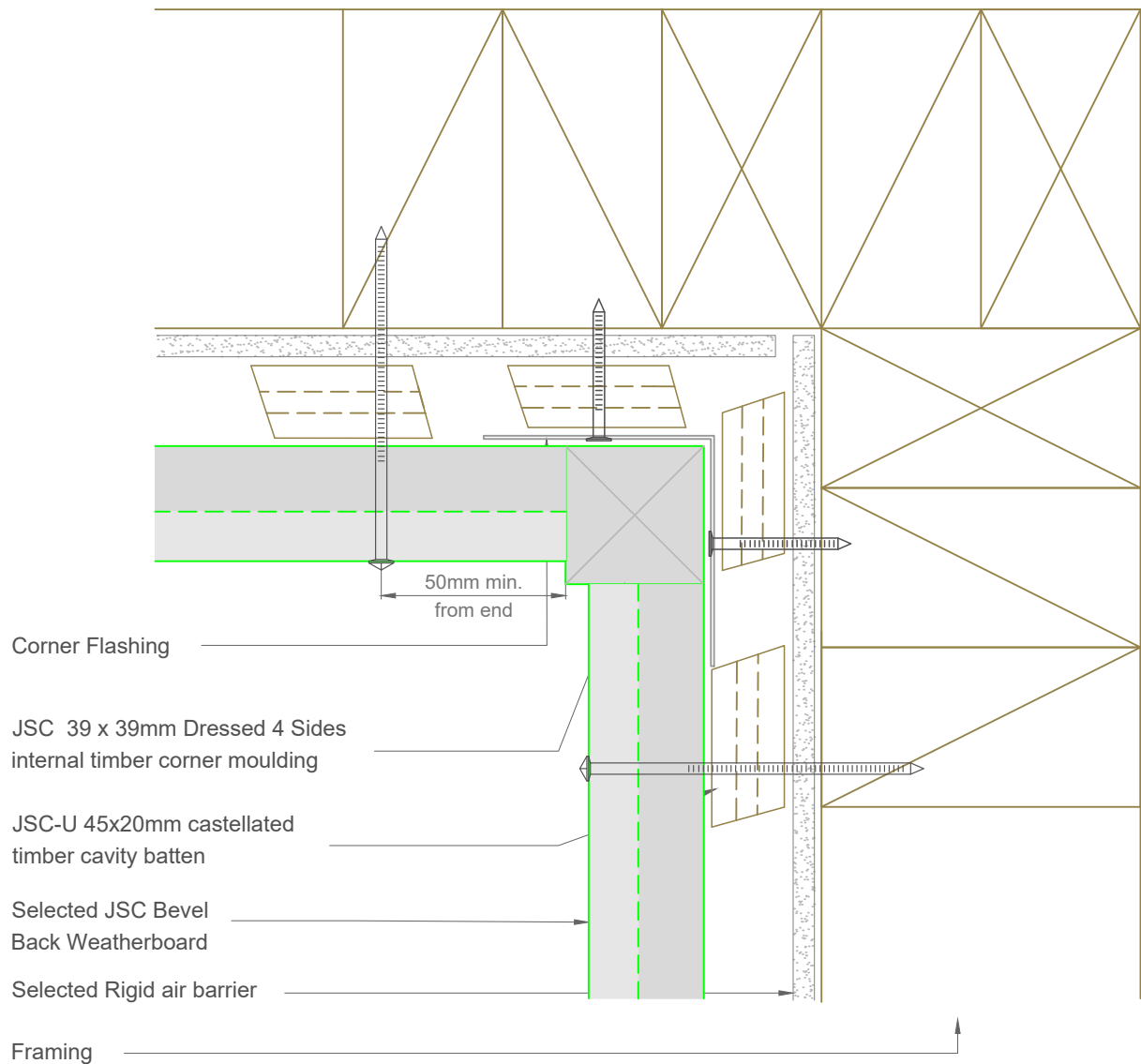
Date: 24/02/2025

Email: TechHelp@jsctimber.co.nz

Web: www.jsctimber.co.nz

Auckland
20 Sawmill Road
Riverhead
☎ 09 412 2800

Christchurch
23 William Lewis Drive
Sockburn
☎ 03 348 9726



Note: To be read in conjunction with complete JSC installation instructions • Details may be subject to change without notification

Internal Corner Detail - Rigid Underlay

JB-R20-11

Scale: 1:2

Date: 24/02/2025

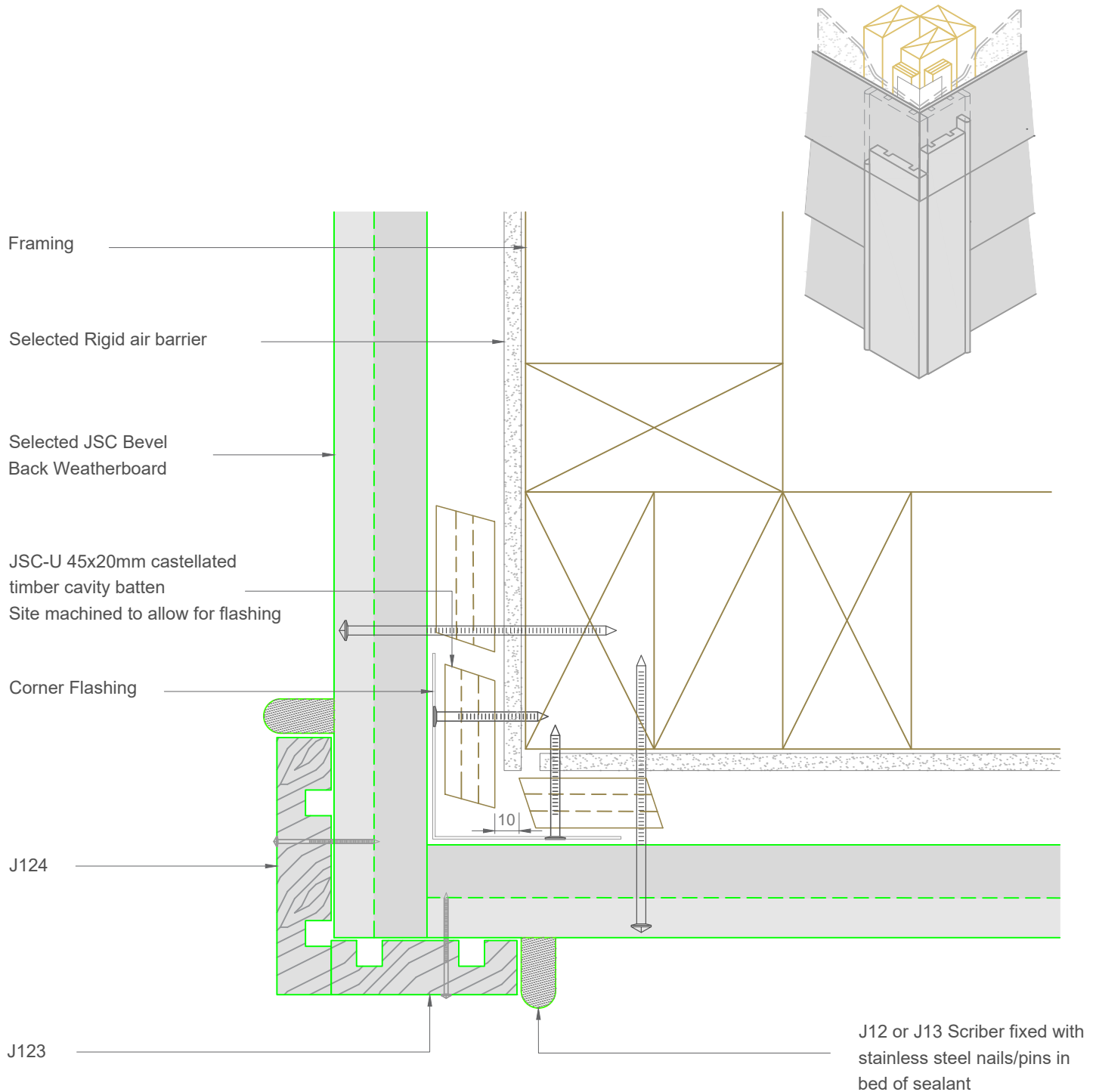
Email: TechHelp@jsttimber.co.nz

Web: www.jsttimber.co.nz

Auckland
20 Sawmill Road
Riverhead
☎ 09 412 2800

Christchurch
23 William Lewis Drive
Sockburn
☎ 03 348 9726

JSC PREMIUM ARCHITECTURAL
& BUILDING SOLUTIONS



Note: To be read in conjunction with complete JSC installation instructions • Details may be subject to change without notification

External Corner Detail - Rigid Underlay

JB-R20-12

Scale: 1:2

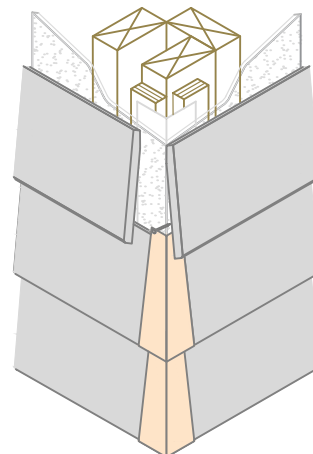
Date: 24/02/2025

Email: TechHelp@jsttimber.co.nz

Web: www.jsttimber.co.nz

Auckland
20 Sawmill Road
Riverhead
☎ 09 412 2800

Christchurch
23 William Lewis Drive
Sockburn
☎ 03 348 9726



Selected JSC Bevel
Back Weatherboard

Framing

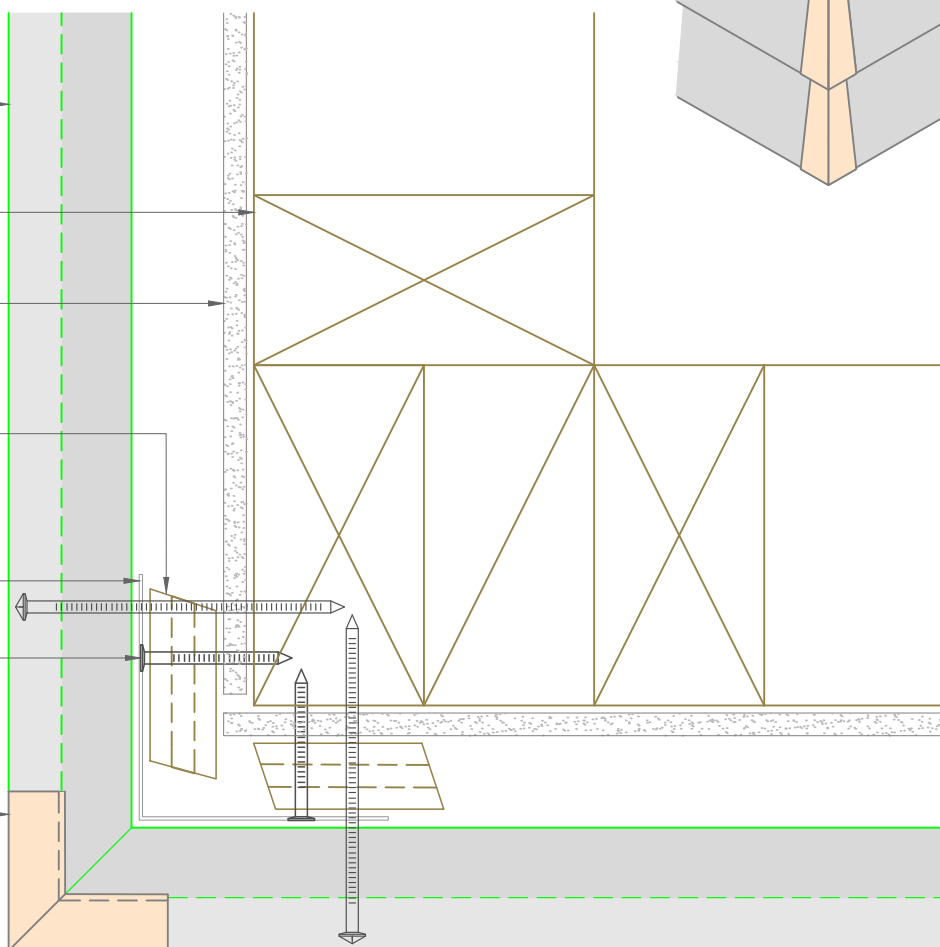
Wall Underlay

JSC-U 45x20mm castellated
timber cavity batten
Site machined to allow for flashing

Corner Flashing

Flashing fixed with SS
clouts @300 centers

Copper or Stainless Steel
Corner soaker as per E2/AS1



Note: To be read in conjunction with complete JSC installation instructions • Details may be subject to change without notification

External Corner Soaker Detail - Rigid Underlay

JB-R20-15

Scale: 1:2

Date: 24/02/2025

Email: TechHelp@jsctimber.co.nz

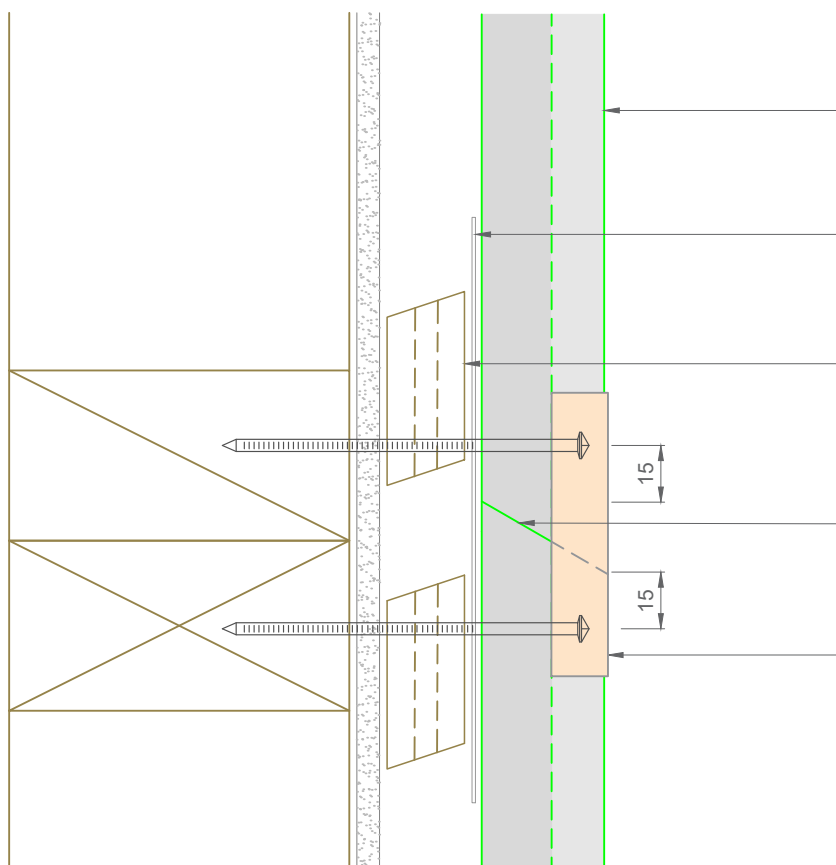
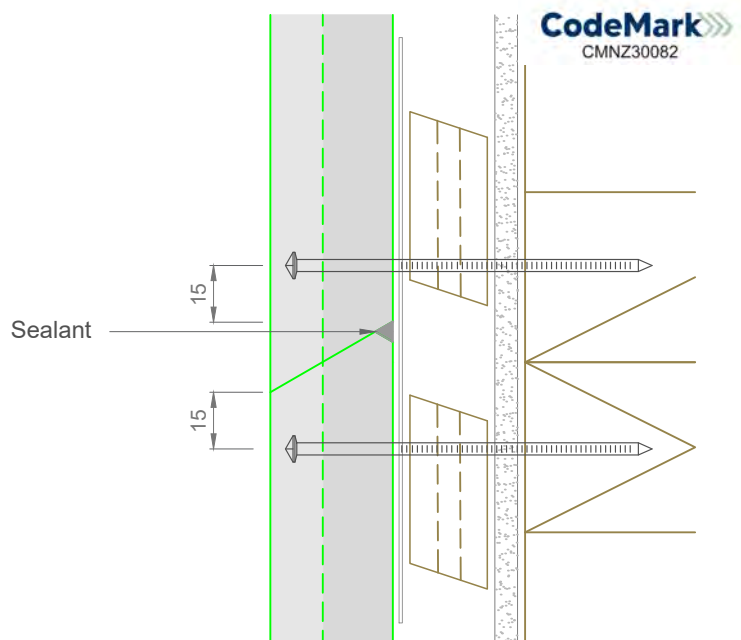
Web: www.jsctimber.co.nz

Auckland
20 Sawmill Road
Riverhead
☎ 09 412 2800

Christchurch
23 William Lewis Drive
Sockburn
☎ 03 348 9726

JSC PREMIUM ARCHITECTURAL
& BUILDING SOLUTIONS

Alternative option for occasional
joints in particular areas
*Not suitable for painted boards



Selected JSC Bevel Back
Weatherboard

Back Flashing min 100 mm
& 50 mm longer than join

JSC 45 x 20mm castellated
treated cavity batten

Protective bedded sealant joint
to be placed between joint in
weatherboards

Copper or Stainless Steel Flat
soaker as per E2/AS1

Note: To be read in conjunction with complete JSC installation instructions • Details may be subject to change without notification

Scarf Joint Detail - Rigid Underlay

JB-R20-20

Scale: 1:2

Date: 24/02/2025

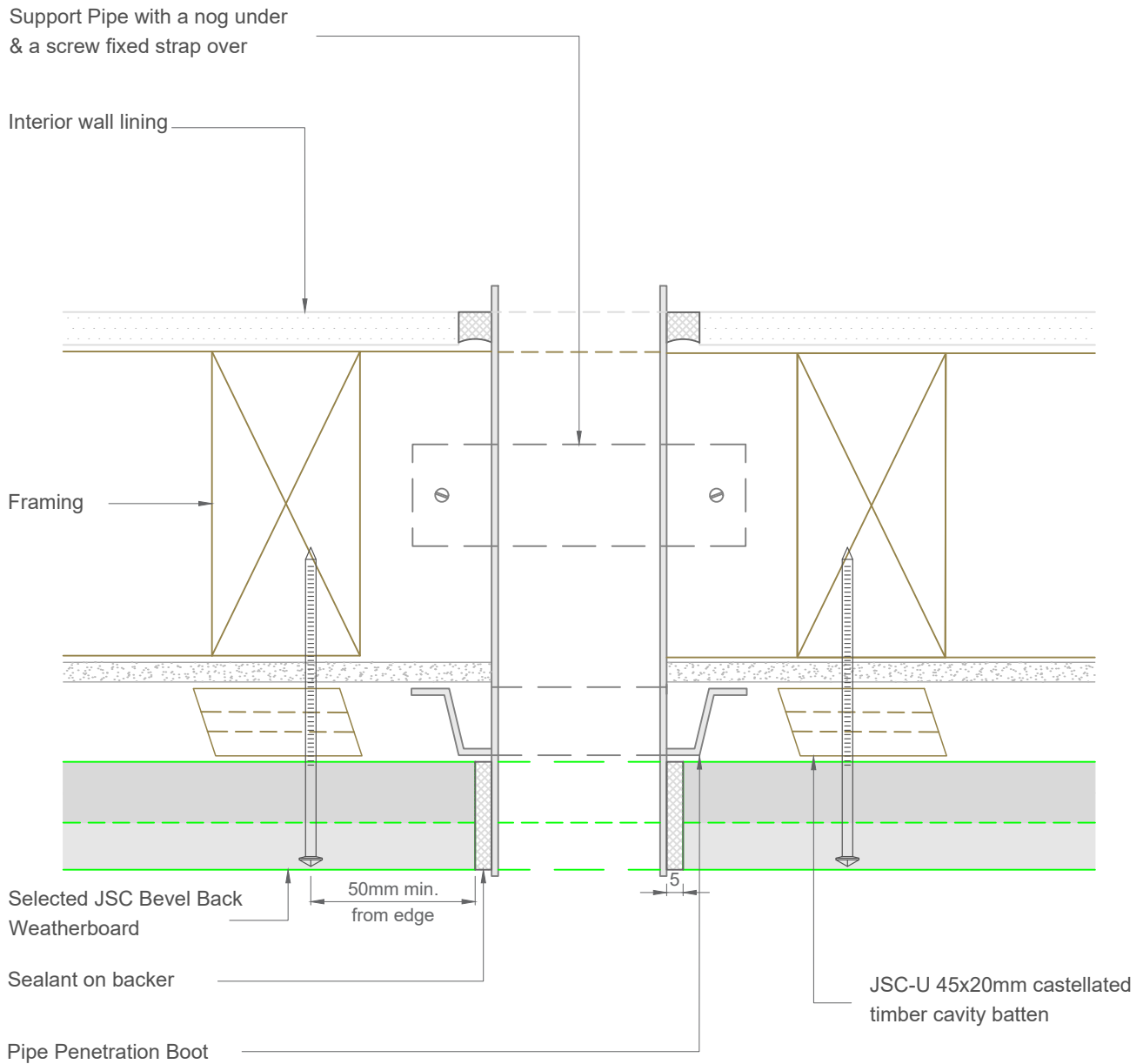
Email: TechHelp@jsttimber.co.nz

Web: www.jsttimber.co.nz

Auckland
20 Sawmill Road
Riverhead
☎ 09 412 2800

Christchurch
23 William Lewis Drive
Sockburn
☎ 03 348 9726

JSC PREMIUM ARCHITECTURAL
& BUILDING SOLUTIONS



Note: To be read in conjunction with complete JSC installation instructions • Details may be subject to change without notification

Pipe Penetration Detail - Rigid Underlay

JB-R20-21

Scale: 1:2

Date: 24/02/2025

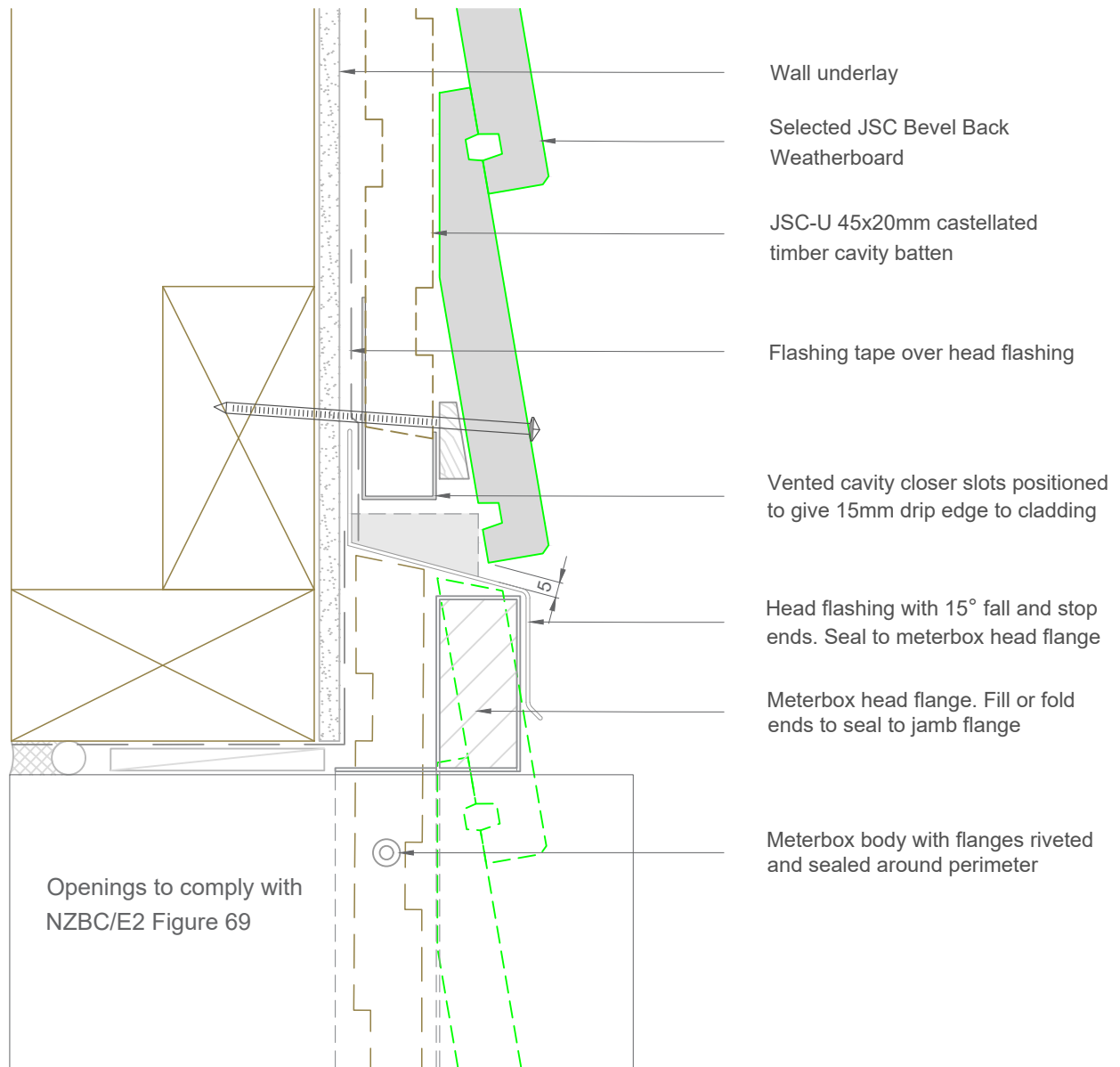
Email: TechHelp@jsttimber.co.nz

Web: www.jsttimber.co.nz

Auckland
20 Sawmill Road
Riverhead
☎ 09 412 2800

Christchurch
23 William Lewis Drive
Sockburn
☎ 03 348 9726

JSC PREMIUM ARCHITECTURAL
& BUILDING SOLUTIONS



Note: To be read in conjunction with complete JSC installation instructions • Details may be subject to change without notification

Meterbox Head Detail - Rigid Underlay

JB-R20-25

Scale: 1:2

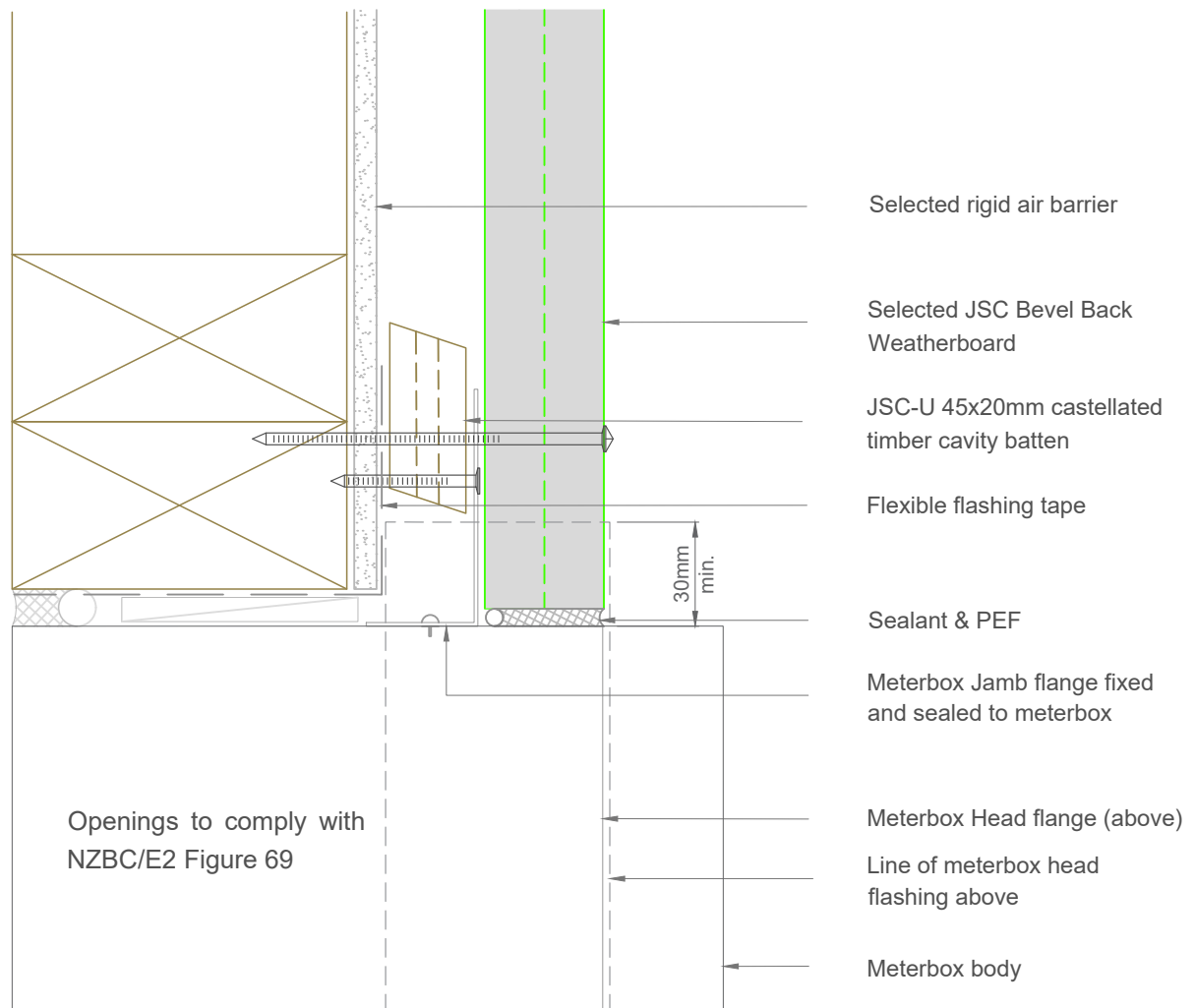
Date: 24/02/2025

Email: TechHelp@jsttimber.co.nz

Web: www.jsttimber.co.nz

Auckland
20 Sawmill Road
Riverhead
☎ 09 412 2800

Christchurch
23 William Lewis Drive
Sockburn
☎ 03 348 9726



Note: To be read in conjunction with complete JSC installation instructions • Details may be subject to change without notification

Meterbox Jamb Detail - Rigid Underlay

JB-R20-26

Scale: 1:2

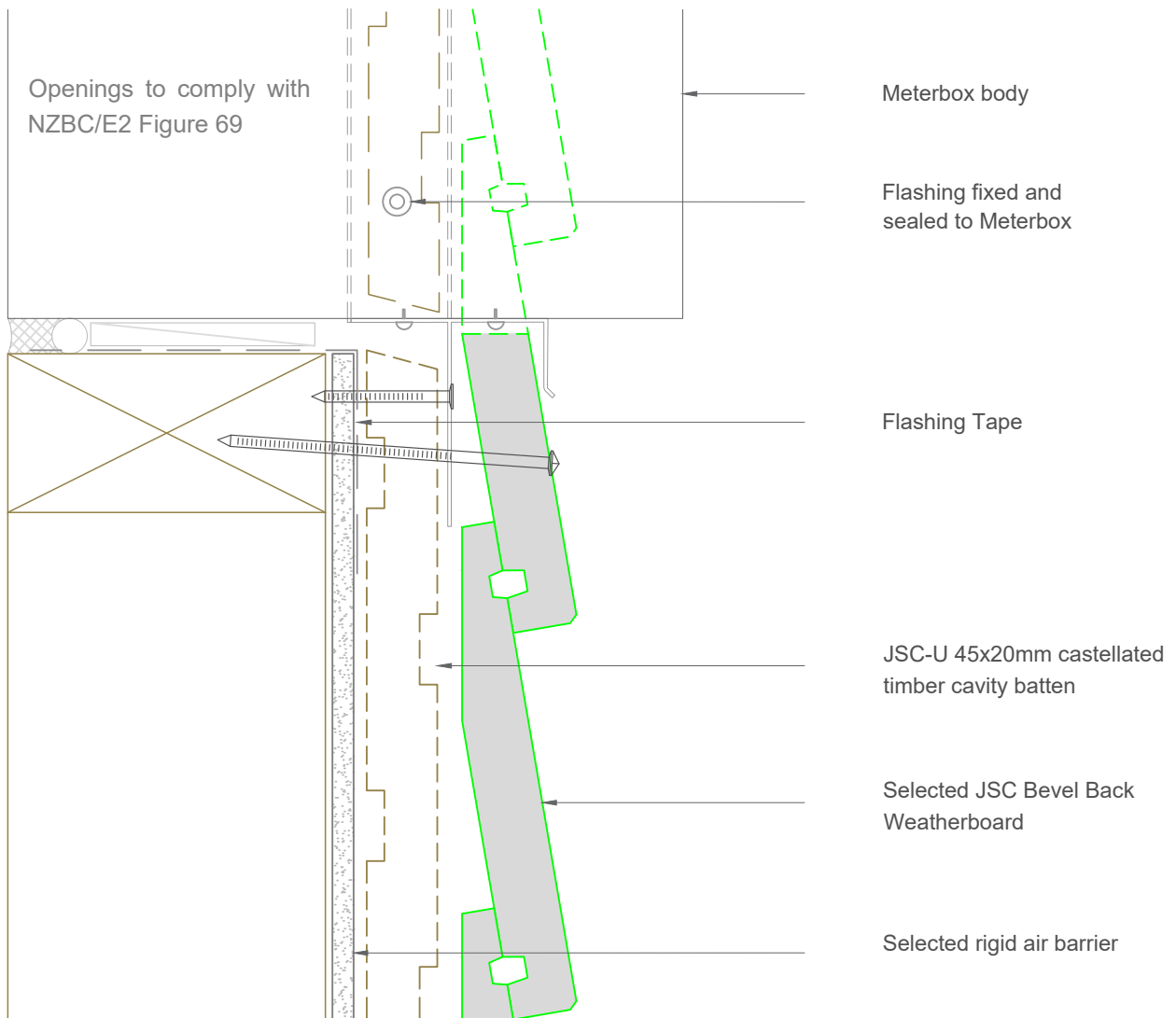
Date: 24/02/2025

Email: TechHelp@jsttimber.co.nz

Web: www.jsttimber.co.nz

Auckland
20 Sawmill Road
Riverhead
☎ 09 412 2800

Christchurch
23 William Lewis Drive
Sockburn
☎ 03 348 9726



Note: To be read in conjunction with complete JSC installation instructions • Details may be subject to change without notification

Meterbox Sill Detail - Rigid Underlay

JB-R20-27

Scale: 1:2

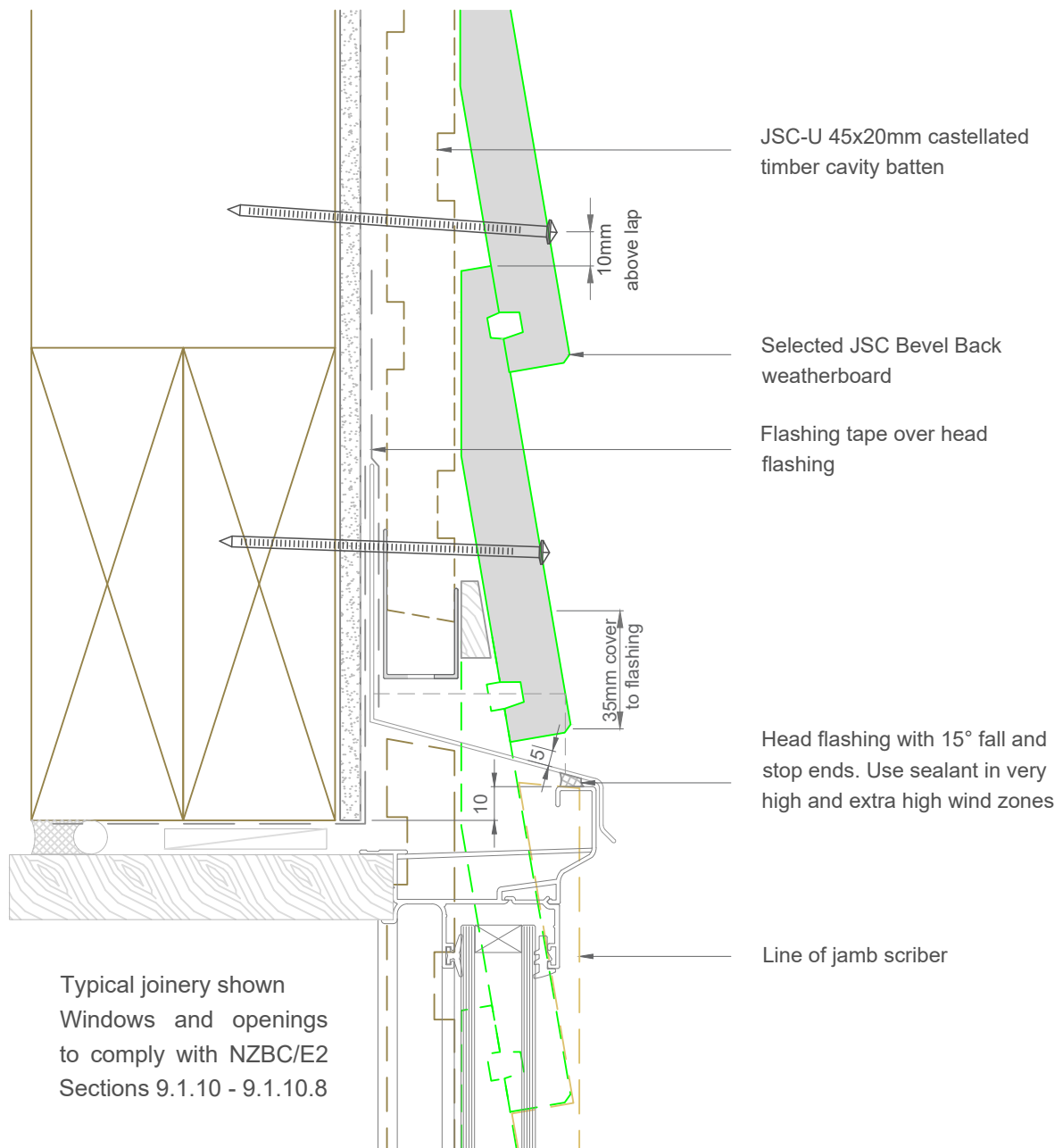
Date: 24/02/2025

Email: TechHelp@jsttimber.co.nz

Web: www.jsttimber.co.nz

Auckland
20 Sawmill Road
Riverhead
☎ 09 412 2800

Christchurch
23 William Lewis Drive
Sockburn
☎ 03 348 9726



Note: To be read in conjunction with complete JSC installation instructions • Details may be subject to change without notification

Window Head Detail - Rigid Underlay

JB-R20-30

Scale: 1:2

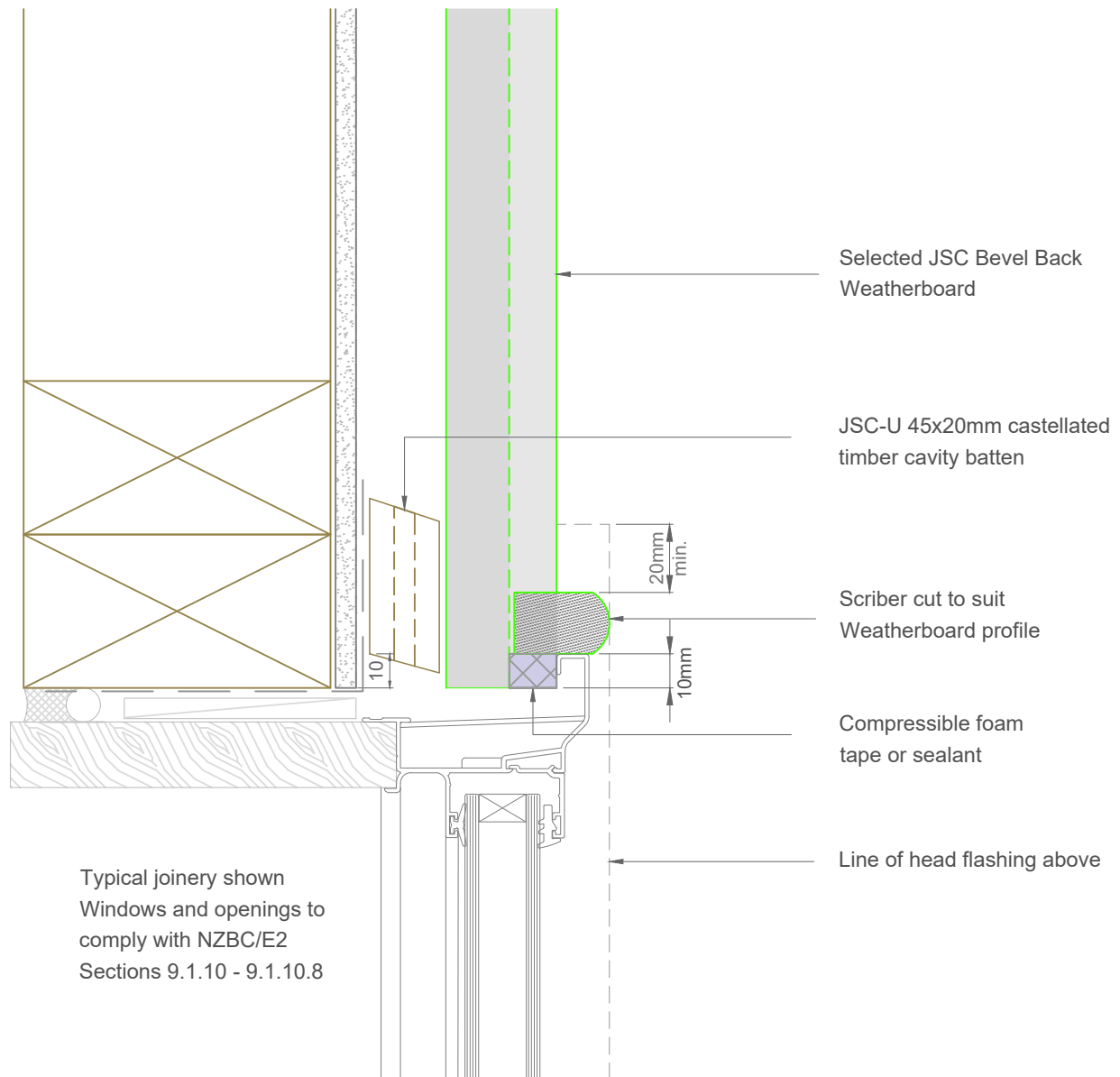
Date: 24/02/2025

Email: TechHelp@jsttimber.co.nz

Web: www.jsttimber.co.nz

Auckland
20 Sawmill Road
Riverhead
☎ 09 412 2800

Christchurch
23 William Lewis Drive
Sockburn
☎ 03 348 9726



Note: To be read in conjunction with complete JSC installation instructions • Details may be subject to change without notification

Window Jamb Detail - Rigid Underlay

JB-R20-31

Scale: 1:2
Date: 24/02/2025

Email: TechHelp@jsttimber.co.nz

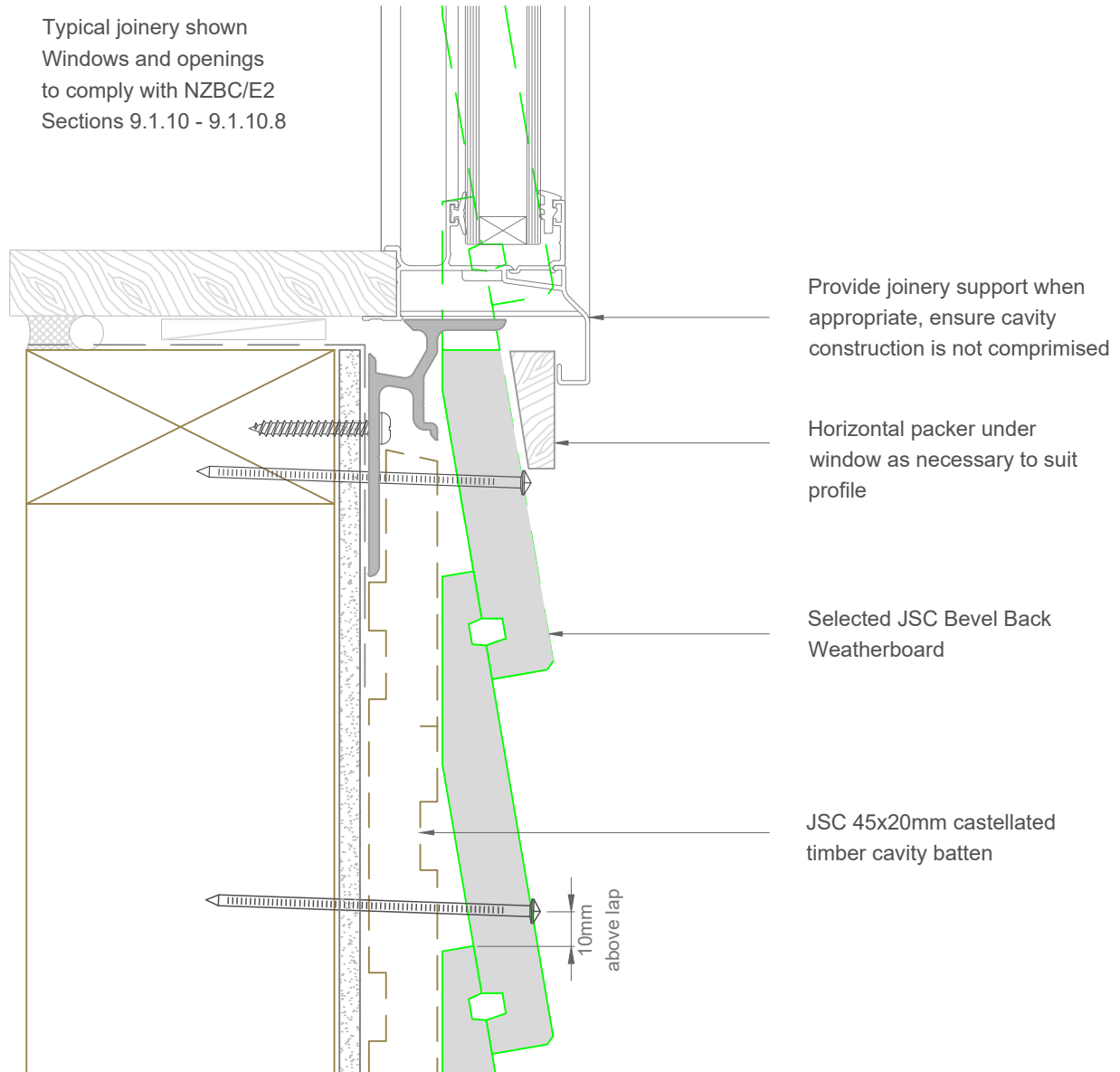
Web: www.jsttimber.co.nz

Auckland
20 Sawmill Road
Riverhead
☎ 09 412 2800

Christchurch
23 William Lewis Drive
Sockburn
☎ 03 348 9726

JSC PREMIUM ARCHITECTURAL
& BUILDING SOLUTIONS

Typical joinery shown
Windows and openings
to comply with NZBC/E2
Sections 9.1.10 - 9.1.10.8



Note: To be read in conjunction with complete JSC installation instructions • Details may be subject to change without notification

Window Sill Detail - Rigid Underlay

JB-R20-33

Scale: 1:2
Date: 24/02/2025

Email: TechHelp@jsctimber.co.nz

Web: www.jsctimber.co.nz

Auckland
20 Sawmill Road
Riverhead
☎ 09 412 2800

Christchurch
23 William Lewis Drive
Sockburn
☎ 03 348 9726